



IN THIS DOCUMENT

- Download Likewise Open.
- Install it on a Mac.
- Join Active Directory.
- Log on with AD credentials.
- Get the Administration and Installation Guide.
- Get help by discussing Likewise with others.

SUPPORTED MAC VERSIONS

Likewise Open runs on the 32-bit versions of the following systems:

- OS X 10.4, 10.5, and 10.6 Intel (x86)
- OS X 10.4 and 10.5 PowerPC
- OS X Server 10.4 and 10.5 PowerPC

ABOUT LIKewise OPEN

Likewise Open connects Mac OS X, Linux, and Unix computers to Microsoft Active Directory.

Likewise Open is free to download and use according to the terms under the Limited GPL 2.1 for client libraries and the GPL 2 for daemons.

<http://www.Likewise.com>

Likewise Open 10-Minute Setup Guide for Mac OS X


Step 1: Download Likewise Open

Go to <http://www.likewise.com/download/>. After you register, right-click the download link for your Mac platform on the Likewise Open Download page, and then save the installer to the desktop of your Mac.

Step 2: Install Likewise Open on a Mac

Installing Likewise Open requires administrative privileges.

Important: On an Intel-based Mac, install the **i386** version of the `.dmg` package. On a Mac that does not have an Intel chip, install the **powerpc** version of the `.dmg` package. On Mac OS X 10.6 (Snow Leopard), you must use the 10.6 universal installation package.

1. Log on the Mac with a local account that has administrative privileges.
2. On the **Apple** menu , click **System Preferences**.
3. Under **Internet & Network**, click **Sharing**, and then select the **Remote Login** check box. Turning on Remote Login lets you access the Mac with SSH after you install Likewise.
4. On the Desktop, double-click the Likewise `.dmg` file.
5. In the Finder window that appears, double-click the Likewise `.mpkg` file.
6. Follow the instructions in the installation wizard.

7. The Join Active Directory Domain dialog appears. If it does not or if you want to join the domain later, see the instructions in the next section, Join Active Directory.

Important: To join a domain, you must have administrative privileges on the Mac and privileges on the Active Directory domain that allow you to join a computer.

8. In the **Computer name** box, type the local hostname of the Mac without the `.local` extension. Because of a limitation with Active Directory, the local hostname cannot be more than 15 characters. Also: `localhost` is not a valid name.
9. In the **Domain to join** box, type the fully qualified domain name of the Active Directory domain that you want to join. Example:

`engineering.likewisedemo.com.`

10. Under **Organizational Unit**, you can join the computer to an OU in the domain by selecting **OU Path** and then typing a path in the **OU Path** box.

Note: To join the computer to an OU, you must be a member of the Domain Administrator security group or have been granted privileges to join a computer to the OU.

Or, to join the computer to the Computers container, select **Default to "Computers" container**.

11. Click **Join**.

Step 3: Log On with AD Credentials

After Likewise Open has been installed and the Mac computer has been joined to a domain, you can log on interactively with your Active Directory credentials. For example, you can log on by using the form `DOMAIN\username`.

1. Log out of your current session.
2. Log on the Mac by using an Active Directory user account in the form of `DOMAIN\username`, where `DOMAIN` is the Active Directory domain name.

Example: `likewisedemo.com\hoenstiv`

Important: When you log on from the command line, you must use a slash to escape the slash character, making the logon form `DOMAIN\\username`.

Get the Administration and Installation Guide


The [Likewise Open Installation and Administration Guide](#) includes instructions on how to troubleshoot joining a domain and logging on.

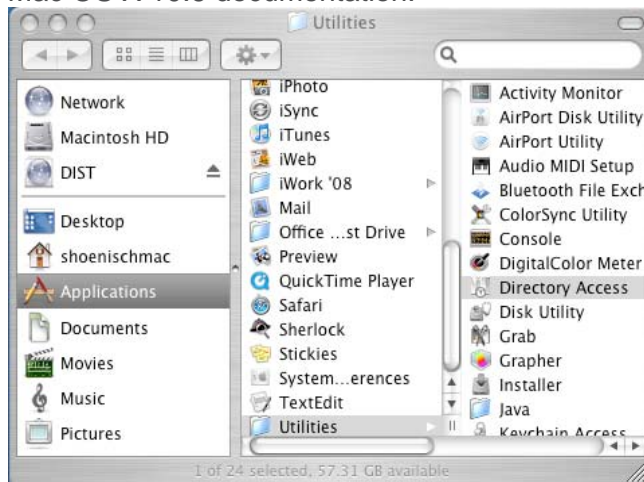
Get Your Questions Answered in the Discussion Group


Participate in the Likewise Open mailing lists at <http://www.likewise.com/community/>.

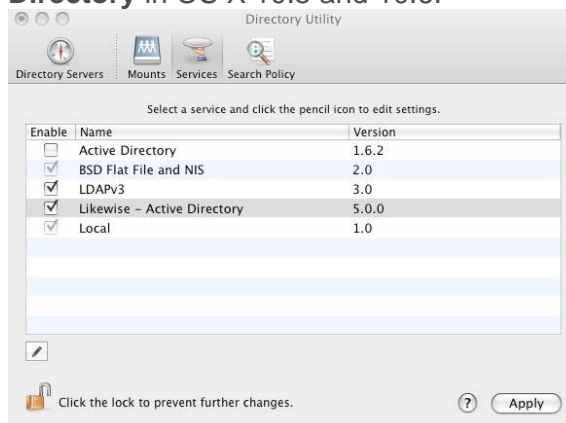
Join Active Directory

To join a domain, you must have administrative privileges on the Mac and privileges on the Active Directory domain to join a computer.


1. In Finder, click **Applications**. In the list of applications, double-click **Utilities**, and then double-click **Directory Access** in OS X 10.4 or **Directory Utility** in OS X 10.5. In Mac OS X 10.6 (Snow Leopard), you gain access to Directory Utility by using the **Apple** menu  to view the system preferences for accounts; for instructions, see your Mac OS X 10.6 documentation.



2. On the **Services** tab, click the lock  and enter an administrator name and password to unlock it.
3. In the list click **Likewise - Active Directory**, make sure the **Enable** check box for **Likewise - Active Directory** is selected, and then click **Configure** in OS X 10.4 or double-click **Likewise - Active Directory** in OS X 10.5 and 10.6.





4. Enter a name and password of a local machine account with administrative privileges.
5. The Join Active Directory Domain dialog appears. If it does not, on the menu bar at the top of the screen, click the **Likewise Domain Join** menu, and then click **Join or Leave Domain**.
6. In the **Computer name** box, type the local hostname of the Mac without the `.local` extension. Because of a limitation with Active Directory, the local hostname cannot be more than 15 characters. Also: `localhost` is not a valid name.

Tip: To find the local hostname of a Mac, on the **Apple** menu , click **System Preferences**, and then click **Sharing**. Under the **Computer Name** box, click **Edit**. Your Mac's local hostname is displayed.

7. In the **Domain to join** box, type the fully qualified domain name of the Active Directory domain that you want to join. Example: `engineering.likewisedemo.com`.
8. Under **Organizational Unit**, you can join the computer to an OU in the domain by selecting **OU Path** and then typing a path in the **OU Path** box.

Note: To join the computer to an OU, you must be a member of the Domain Administrator security group or have been granted privileges to join a computer to the OU.

Or, to join the computer to the Computers container, select **Default to "Computers" container**.

9. Click **Join**.
10. After you are joined to the domain, you can set the display login window preference on the Mac: On the **Apple** menu , click **System Preferences**, and then under **System**, click **Accounts**.
11. Click the lock  and enter an administrator name and password to unlock it.
12. Click **Login Options**, and then under **Display login window as**, select **Name and password**.

To solve domain-join problems, see the [Likewise Open Installation and Administration Guide](#) or open a Terminal window and run this command:

```
domainjoin-cli --help
```